

The Course Placement Chart shows the progression of English, ESL, Reading and Math courses that students should take to complete their requirements. **The starting course can vary based upon the placement test, high school transcripts or other college transcripts.** Once students start the sequence, they are expected to take each required course. Please make an appointment to see a counselor before registering for classes.

Assessment scores are valid for two years from your test date.

Questions regarding placement should be directed to Counselors prior to starting the sequence.

If English is not your native language and you have taken the native English Placement Test, the placement on your report may not be accurate for you. The native English test does not accurately measure reading and grammar skills of non-native speakers of English.

If English is your second language, it is recommended for you to take the ESL placement test, which can correctly place you in the appropriate ESL courses.

**Re-testing Options:**

1. You may re-test every 90 days.
2. You may re-test with a counselor approval: Please bring documentation to support re-testing, such as high school transcripts, other California Community College test scores with placement or other college transcripts.



*Steps to succeed at Fullerton College*

1. \_\_\_\_ Admission Application
2. \_\_\_\_ Orientation
3. \_\_\_\_ Assessment
4. \_\_\_\_ Official Documents
5. \_\_\_\_ Group Advising
6. \_\_\_\_ Counseling
7. \_\_\_\_ Financial Aid
8. \_\_\_\_ Schedule of Classes
9. \_\_\_\_ Permit to Register
10. \_\_\_\_ Registration
11. \_\_\_\_ Fees
12. \_\_\_\_ First Day Attendance
13. \_\_\_\_ Educational Planning
14. \_\_\_\_ Student Services



# Assessment Center

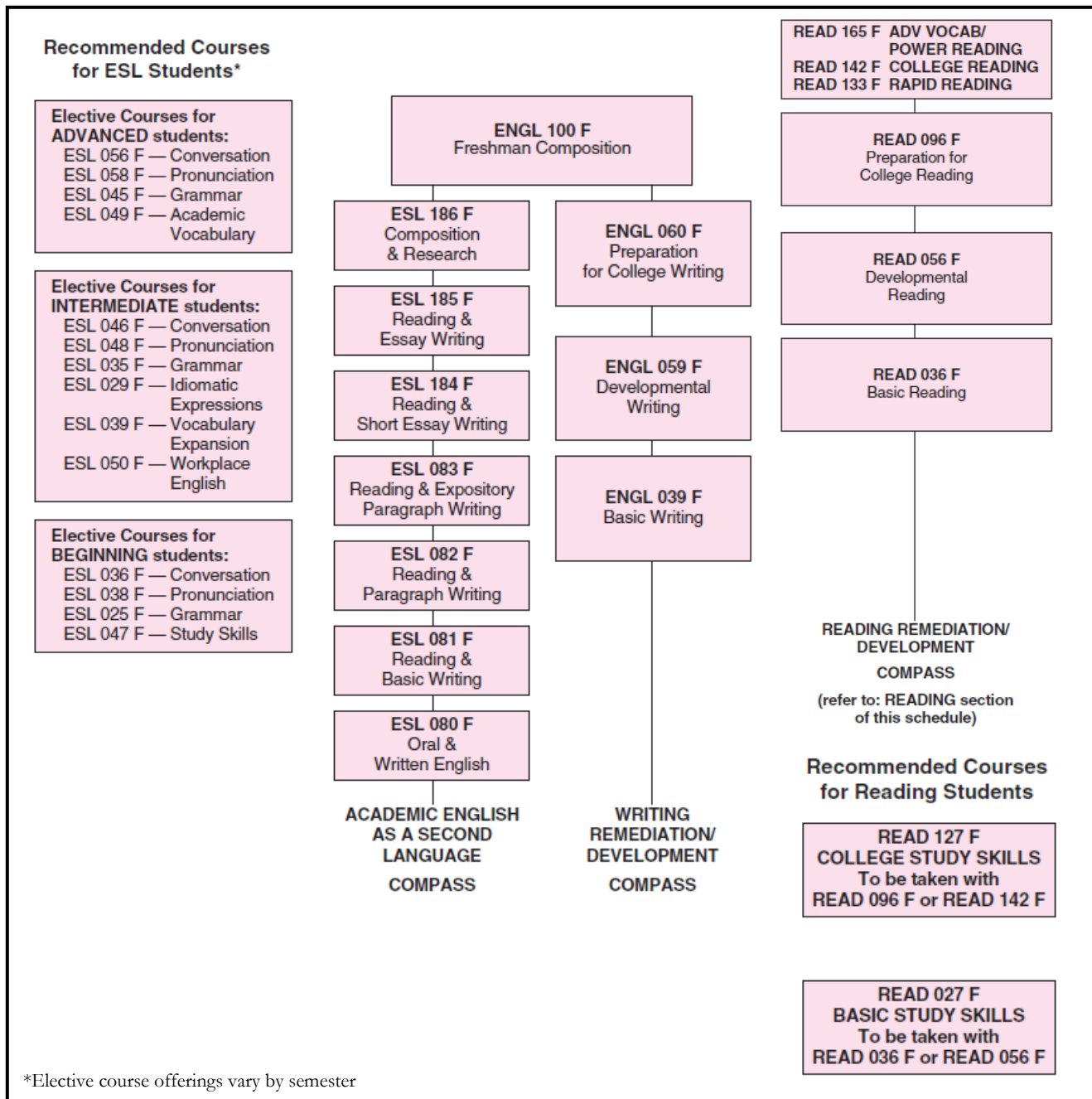
## Course Placements

- English
- ESL
- Reading
- Math

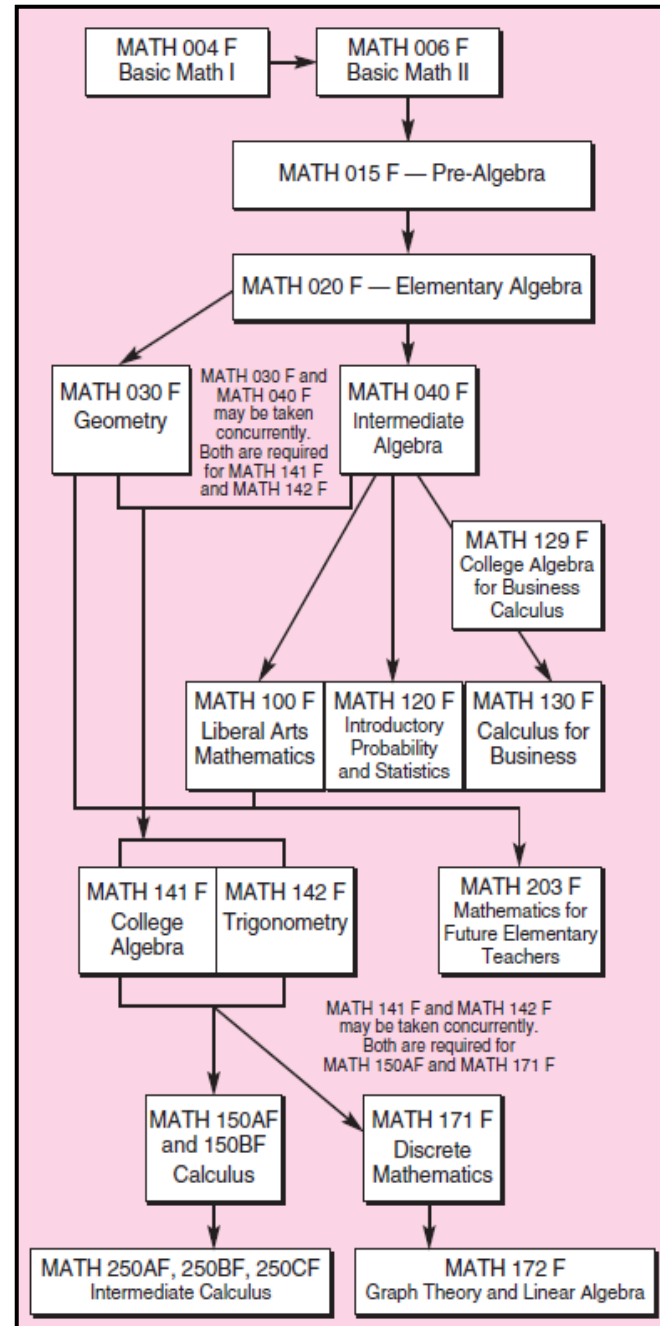
**Location: Room 513**  
**Phone: (714) 992-7117**  
**Hours: M-F 8am – 4pm**  
**S 9am – 1pm**

# Fullerton College Course Placement Chart

## English as a Second Language, English, and Reading Course Sequence



## Math Course Sequence



\*Elective course offerings vary by semester